

## HCPS139405 TYPE

SPECIALIZE IN HIGH CURRENT & HIGH  
INDUCTANCE FOR SMD INDUCTORS

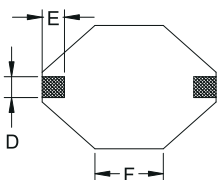
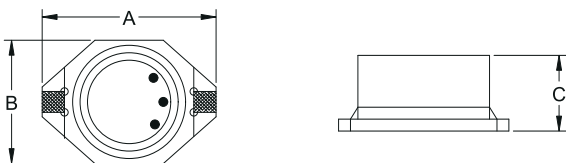
### CHARACTERISTICS

1. TESTED AT 100 KHZ, 0.1 VRMS
2. INDUCTANCE DROP=10% TYPE. AT RATED IDC 1  
TEMP. 15°C RISE TYPE. AT IDC 2
3. OPERATING TEMPERATURE RANGE -40°C TO +85°C
4. ELECTRICAL SPECIFICATIONS AT 25°C

### ELECTRICAL SPECIFICATION

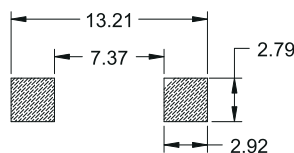
ITEM	L	DCR	SRF	IDC1	IDC2
HCPS139405	( $\mu$ H)	MAX. ( $\Omega$ )	MIN. (MHz)	MAX. (A)	MAX. (A)
1R0M	1.0 $\pm$ 20%	0.021	140	5.6	5.0
1R5M	1.5 $\pm$ 20%	0.022	120	5.2	4.5
2R2M	2.2 $\pm$ 20%	0.032	80	5.0	3.8
3R3M	3.3 $\pm$ 20%	0.039	70	3.9	3.3
4R7M	4.7 $\pm$ 20%	0.054	40	3.2	2.7
6R8M	6.8 $\pm$ 20%	0.075	38	2.8	2.2
100M	10.0 $\pm$ 20%	0.101	35	2.4	2.0
150M	15.0 $\pm$ 20%	0.150	25	2.0	1.5
220M	22.0 $\pm$ 20%	0.207	19	1.6	1.3
330M	33.0 $\pm$ 20%	0.334	15	1.4	1.1
470M	47.0 $\pm$ 20%	0.472	13	1.0	0.8

### CONSTRUCTION (m/m)



A: 12.95 MAX. B: 9.40 MAX.  
C: 5.21 MAX. D: 2.54  
E: 2.54 F: 7.62

### Land Patterns



### COIL CODE

HCPS 139405 150 M

TOLERANCE :  $\pm$  20%  
INDUCTANCE : 15  $\mu$ H  
C DIM.  
B DIM.  
A DIM.  
HCPS TYPE

SMD

K:  $\pm$  10% M:  $\pm$  20%

\* Hong can design any part to your requirements with different inductance.

\* All parameters as this content presented are subject to final specifications both sides confirmed.